

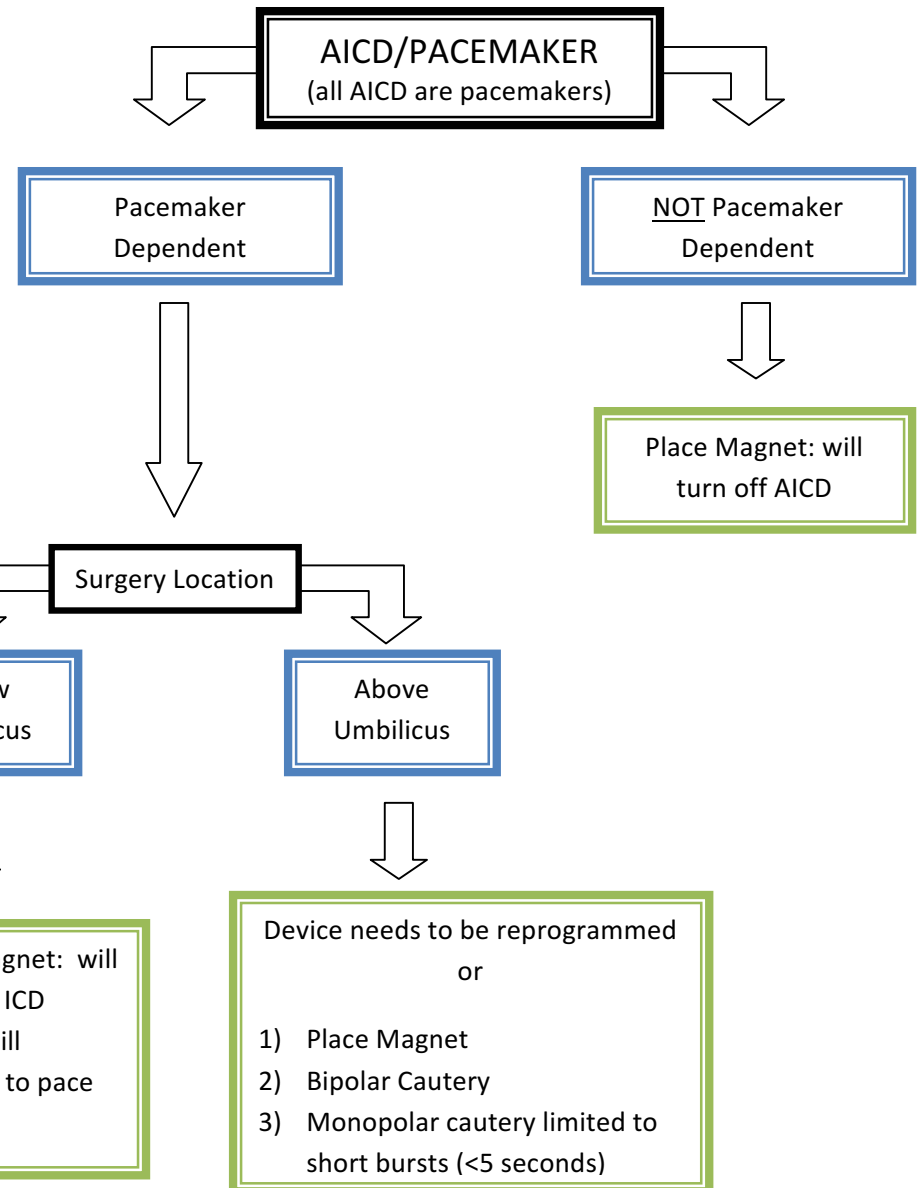
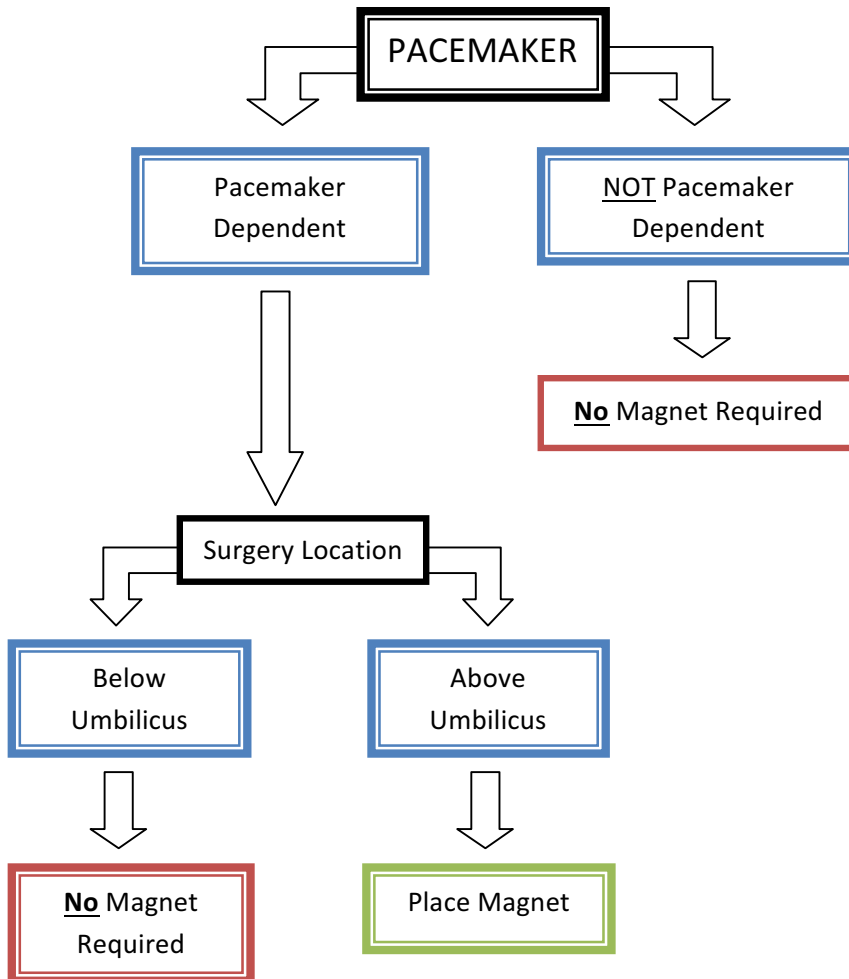
### Questions for Cardiology:

- What is the underlying rhythm?
- Indication for pacemaker? Last interrogation < 1 year ago?
- Indication for AICD? Last interrogation < 6 months ago?

### Effects of Magnet on Implantable Cardiac Device:

**Pacemaker:** Asynchronous Pacing – pacemaker will not sense cautery (which could inhibit pacing if registers as native activity)  
**AICD:** Turns off ICD, no effect on pacing (prevents cautery from discharging ICD; however, can still sense cautery as native activity, which could inhibit pacer activity)

## PACEMAKER or AICD?



### Cardiac Resynchronization Therapy

- CRT-P =pacemaker
- CRT-D =defibrillator/pacemaker
- Bi-Ventricular, usually 100% paced
- Heart failure NYHA class III and IV